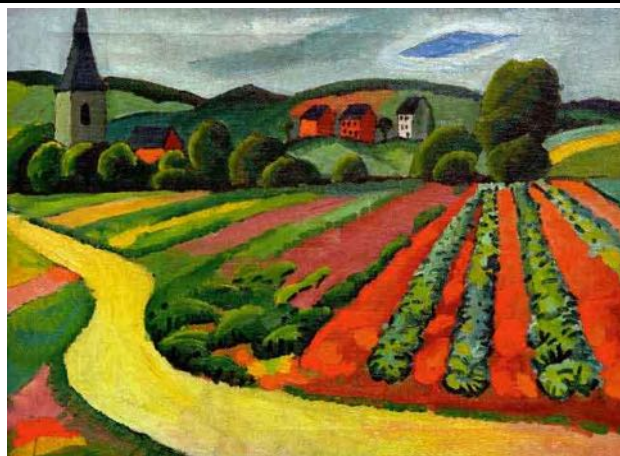


village, church, houses, trees, bushes, vegetables, fields,  
crop, path, hills, horizon, sky, clouds

**In jedes der Wortfelder hat sich ein Fremdling  
hineingeschlichen.**

ILL. „LANDSCAPE WITH CHURCH AND PATH“, BY AUGUST MACKE



**Streiche in jeder Zeile ein Wort:**

WORD FIELD						
COLOUR	red	green	yellow	wolf	white	black
PEOPLE	head	mouth	leg	hand	fox	foot
WARDROBE	jacket	sandals	boots	lion	tie	sweater
TOYS	snake	doll	skates	puzzle	slide	ball
KITCHEN	stove	microwave	toaster	mixer	grizzly	freezer
ROAD	car	ambulance	bicycle	shark	taxi	truck
FARM	spy	pig	cow	hay	tractor	horse
HOUSE	bed	door	deer	stereo	table	telephone
BUILDING	lighthouse	garage	church	hedgehog	school	castle
AIR	rocket	plane	snail	helicopter	balloon	jet
BIRDS	goose	eagle	pigeon	owl (a:ul)	duck	stone
INSECTS	beetle	ant	dragonfly	wasp	palm tree	bee
TOOLS	hammer	saw	daffodil	drill	wrench	ax
SUMMER	sun	christmas	flower	beach	holiday	tent
WINTER	snow	ice cream	sledge	snowman	icicle	snowboard
SCHOOL	cell phone	pencil	blackboard	books	chalk	paper
COMPUTER	screen	hard disk	keyboard	rat	mouse	notebook
BEACH	sand	water	boat	umbrella	iceberg	ice cream
SPORT	run	race	winner	team	game	whisky
HOSPITAL	bed	bullfight	doctor	nurse	ambulance	X-ray
LANGUAGE	word	gun	sentence	letter	translation	mistake
TOWN	building	street	traffic light	desert	market	bus stop
ZOO	tiger	monkey	rocket	turtle	goldfish	elephant
LONDON	Thames	capital	Big Ben	Tower	Ayers Rock	Tube
POST	office	hunter	letter	stamp	parcel	postman
BOOK	worm	title	page	bookshop	pictures	story